



# Corporate Wear

2026 CATALOGUE





Elevate your corporate identity with our **PREMIUM WORK SHIRTS**. Made with the finest materials, these shirts provide the perfect platform to **SHOWCASE YOUR BRAND** with style and sophistication. With a wide range of styles to choose from, you can create a cohesive and professional look for your team. Our **CORPORATE WEAR** range has been designed to make a lasting impression.



BAS-7756  
**MENS SHORT SLEEVE  
 KENSINGTON SHIRT**

**Weight** 105g/m<sup>2</sup> **Fabric** 65% polyester, 35% cotton poplin • tonal buttons • chest pocket • back yoke with knife pleats • curved hem

BL GY LB N W

HALF CHEST (CM) **STANDARD FIT**

S	M	L	XL	2XL	3XL	4XL	5XL
55	58	61	64	67	70	73	76

BAS-7757  
**LADIES SHORT SLEEVE  
 KENSINGTON SHIRT**

**Weight** 105g/m<sup>2</sup> **Fabric** 65% polyester, 35% cotton poplin • tonal buttons • two chest pockets with button down flap • tab details on sleeve • front and back darts • back yoke • curved hem

BL GY LB N W

HALF CHEST (CM) **STANDARD FIT**

S	M	L	XL	2XL	3XL	4XL
48	51	54	57	60	63	66

BAS-7756 & BAS-7757 ARE AVAILABLE IN THE 7 COLOURS SHOWN ON THIS PAGE



BAS-7758

**MENS LONG SLEEVE KENSINGTON SHIRT**

**Weight** 105g/m<sup>2</sup> **Fabric** 65% polyester, 35% cotton poplin • tonal buttons  
 • chest pocket • back yoke with knife pleats  
 • adjustable two button cuff • curved hem

BL GY LB N W

HALF CHEST (CM) **STANDARD FIT**

S	M	L	XL	2XL	3XL	4XL	5XL
55	58	61	64	67	70	73	76



BAS-7759

**LADIES LONG SLEEVE KENSINGTON SHIRT**

**Weight** 105g/m<sup>2</sup> **Fabric** 65% polyester, 35% cotton poplin • tonal buttons  
 • two chest pockets with button down flap • two button cuff • front and back darts • back yoke • curved hem

BL GY LB N W

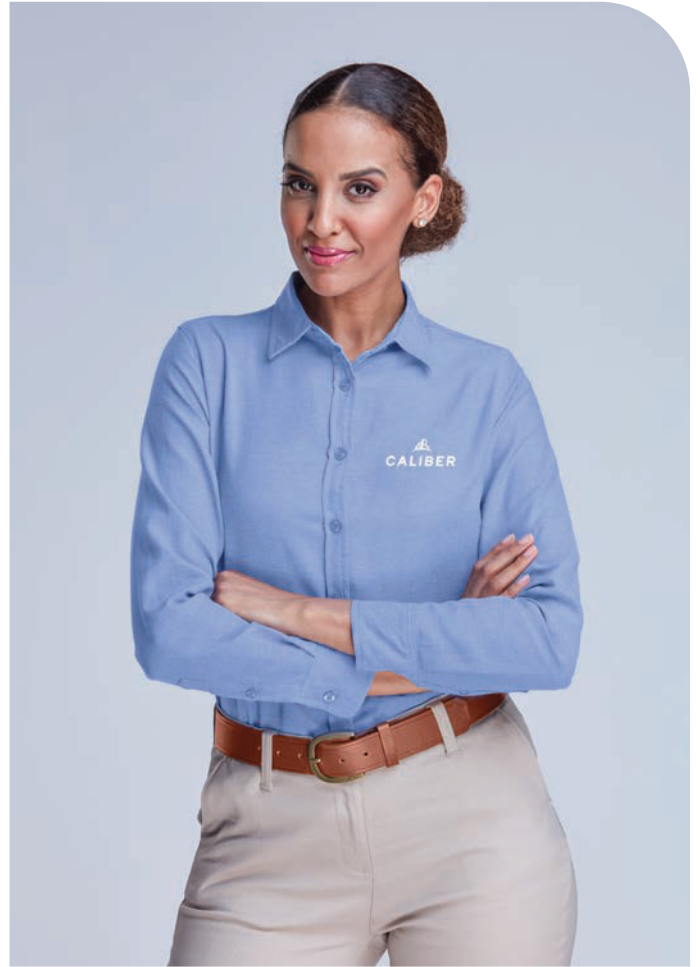
HALF CHEST (CM) **STANDARD FIT**

S	M	L	XL	2XL	3XL	4XL
48	51	54	57	60	63	66

BAS-7758 & BAS-7759 ARE AVAILABLE IN THE 5 COLOURS SHOWN ON THIS PAGE



PRICE INCLUDES DIGITAL TRANSFER OR EMBROIDERY. SEE PAGE 3 FOR DETAILS



CW-AL-181-A  
**MENS LONG SLEEVE OXFORD SHIRT**

**Weight** 120g/m<sup>2</sup> **Fabric** 80% polyester, 20% cotton • oxford weave • chest pocket • adjustable two button cuff • back yoke with box pleat • curved hem

DG2 SB W

HALF CHEST (CM) **STANDARD FIT**

S	M	L	XL	2XL	3XL	4XL	5XL
54	57	60	63	66	69	72	75

CW-AL-182-A  
**LADIES LONG SLEEVE OXFORD SHIRT**

**Weight** 120g/m<sup>2</sup> **Fabric** 80% polyester, 20% cotton • oxford weave • bust darts • adjustable two button cuff • curved hem with side slits

DG2 SB W

HALF CHEST (CM) **STANDARD FIT**

S	M	L	XL	2XL	3XL	4XL
49	52	55	58	61	64	67

CW-AL-181-A, CW-AL-182-A, CW-UB-183-A & CW-UB-184-A ARE AVAILABLE IN THE 3 COLOURS SHOWN ON THIS PAGE





CW-UB-183-A  
**MENS SHORT SLEEVE OXFORD SHIRT**

**Weight** 120g/m<sup>2</sup> **Fabric** 80% polyester, 20% cotton • oxford weave • chest pocket • back yoke with box pleat • curved hem

DG2 SB W

HALF CHEST (CM) **STANDARD FIT**

S	M	L	XL	2XL	3XL	4XL	5XL
54	57	60	63	66	69	72	75

CW-UB-184-A  
**LADIES SHORT SLEEVE OXFORD SHIRT**

**Weight** 120g/m<sup>2</sup> **Fabric** 80% polyester, 20% cotton • oxford weave • bust darts • back yoke • curved hem with side slits

DG2 SB W

HALF CHEST (CM) **STANDARD FIT**

S	M	L	XL	2XL	3XL	4XL
49	52	55	58	61	64	67



ALT-EPML  
**MENS LONG SLEEVE EMPIRE SHIRT**

**Weight** 135g/m<sup>2</sup> **Fabric** 65% polyester, 35% cotton poplin  
 • concealed left chest pocket • adjustable cuffs

BL N SB W

HALF CHEST (CM) **STANDARD FIT**

S	M	L	XL	2XL	3XL	4XL	5XL
52	56	60	64	68	72	76	80

ALT-EPLL  
**LADIES LONG SLEEVE EMPIRE SHIRT**

**Weight** 135g/m<sup>2</sup> **Fabric** 65% polyester, 35% cotton poplin  
 • long sleeves with adjustable cuffs • side slits • front and back yoke

BL N SB W

HALF CHEST (CM) **STANDARD FIT**

S	M	L	XL	2XL	3XL	4XL
45	49	53	57	61	65	69



ALT-EPMS  
**MENS SHORT SLEEVE EMPIRE SHIRT**

**Weight** 135g/m<sup>2</sup> **Fabric** 65% polyester, 35% cotton poplin  
 • concealed left chest pocket

BL N SB W

HALF CHEST (CM) **STANDARD FIT**

S	M	L	XL	2XL	3XL	4XL	5XL
52	56	60	64	68	72	76	80

ALT-EPLS  
**LADIES SHORT SLEEVE EMPIRE SHIRT**

**Weight** 135g/m<sup>2</sup> **Fabric** 65% polyester, 35% cotton poplin  
 • side slits • front and back yoke

BL N SB W

HALF CHEST (CM) **STANDARD FIT**

S	M	L	XL	2XL	3XL	4XL
45	49	53	57	61	65	69

ALT-EPML, ALT-EPLL, ALT-EPMS & ALT-EPLS ARE AVAILABLE IN THE 4 COLOURS SHOWN ON THIS PAGE



PRICE INCLUDES DIGITAL TRANSFER. SEE PAGE 3 FOR DETAILS



BAS-11210

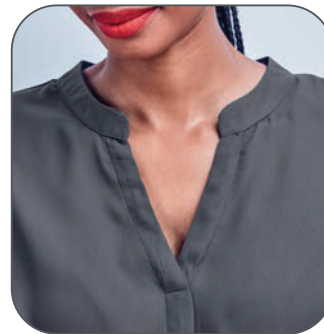
**LADIES LONG SLEEVE AVA BLOUSE**

**Weight** 100g/m<sup>2</sup> **Fabric** 100% polyester • mandarin collar  
 • placket down centre front • bust darts • keyhole and pleat detail at cuff with one button

BL C N

HALF CHEST (CM) **STANDARD FIT**

S	M	L	XL	2XL	3XL	4XL
47	50	53	56	59	62	65



CONCEALED PLACKET DOWN CENTRE FRONT



KEYHOLE & PLEAT DETAIL AT CUFF WITH ONE BUTTON

BAS-11209

**LADIES SHORT SLEEVE AVA BLOUSE**

**Weight** 100g/m<sup>2</sup> **Fabric** 100% polyester • mandarin collar  
 • concealed placket down centre front • bust darts

BL C N

HALF CHEST (CM) **STANDARD FIT**

S	M	L	XL	2XL	3XL	4XL
47	50	53	56	59	62	65

BAS-11210 & BAS-11209 ARE AVAILABLE IN THE 3 COLOURS SHOWN ON THIS PAGE



PRICE INCLUDES DIGITAL TRANSFER. SEE PAGE 3 FOR DETAILS



DOUBLE PLACKET  
DOWN CENTRE FRONT  
KEYHOLE & PLEAT DETAIL AT  
CUFF WITH ONE BUTTON

BAS-11208

**LADIES LONG SLEEVE  
ZENOBIA BLOUSE**

**Weight** 100g/m<sup>2</sup> **Fabric** 100% polyester

- mandarin collar with two pleats
- double placket down centre front
- keyhole and pleat detail at cuff with one button
- back yoke with box pleat

BL N W

HALF CHEST (CM) **STANDARD FIT**

S	M	L	XL	2XL	3XL	4XL
49	52	55	58	61	64	67



**A VERSATILE BLOUSE,**  
wearable with sleeves  
rolled up or down  
**FOR ANY OCCASION**





CW-UB-185-A  
**LADIES LONG SLEEVE  
 CANDICE BLOUSE**

**Weight** 130g/m<sup>2</sup> **Fabric** 100% polyester  
 • mandarin collar with ties • pleated front and back panel design • three button placket  
 • longer back length • long sleeves features single buttoned cuff • roll up sleeve with tab and button

BL GY N W

HALF CHEST (CM) **STANDARD FIT**

S	M	L	XL	2XL	3XL	4XL
47	50	53	56	59	62	65





CW-UB-191-A, CW-UB-193-A, CW-UB-190-A & CW-UB-192-A ARE AVAILABLE IN THE 3 COLOURS SHOWN ON THIS PAGE

**NEW**

CW-UB-191-A

**MENS SHORT SLEEVE SHEFFIELD STRETCH SHIRT**

**Weight** 115g/m<sup>2</sup> **Fabric** 80% polyester, 17% cotton, 3% spandex  
 • lightweight stretch fabric ensures comfort and ease of movement • button down collar • back yoke with shoulder pleats • curved hem

BL N W

HALF CHEST (CM) **STANDARD FIT**

S	M	L	XL	2XL	3XL	4XL	5XL
54	57	60	63	66	69	72	75

**NEW**

CW-UB-193-A

**LADIES SHORT SLEEVE SHEFFIELD STRETCH SHIRT**

**Weight** 115g/m<sup>2</sup> **Fabric** 80% polyester, 17% cotton, 3% spandex  
 • lightweight stretch fabric ensures comfort and ease of movement • open neck collar • features front and back darts for shaping • back yoke • curved hem

BL N W

HALF CHEST (CM) **STANDARD FIT**

S	M	L	XL	2XL	3XL	4XL
49	52	55	58	61	64	67

PRICE INCLUDES DIGITAL TRANSFER. SEE PAGE 3 FOR DETAILS



Built for comfort, **DESIGNED TO STRETCH** - a button-up that moves with you



**NEW**

CW-UB-190-A

**MENS LONG SLEEVE SHEFFIELD STRETCH SHIRT**

**Weight** 115g/m<sup>2</sup> **Fabric** 80% polyester, 17% cotton, 3% spandex  
 • lightweight stretch fabric ensures comfort and ease of movement  
 • button down collar • adjustable two button cuff • back yoke with shoulder pleats • curved hem

BL N W

HALF CHEST (CM) **STANDARD FIT**

S	M	L	XL	2XL	3XL	4XL	5XL
54	57	60	63	66	69	72	75

**NEW**

CW-UB-192-A

**LADIES LONG SLEEVE SHEFFIELD STRETCH SHIRT**

**Weight** 115g/m<sup>2</sup> **Fabric** 80% polyester, 17% cotton, 3% spandex  
 • lightweight stretch fabric ensures comfort and ease of movement  
 • open neck collar • adjustable two button cuff • features front and back darts for shaping • back yoke • curved hem

BL N W

HALF CHEST (CM) **STANDARD FIT**

S	M	L	XL	2XL	3XL	4XL
49	52	55	58	61	64	67

PRICE INCLUDES DIGITAL TRANSFER. SEE PAGE 3 FOR DETAILS



BAS-809 & BAS-810 ARE AVAILABLE IN THE 6 COLOURS SHOWN ON THIS PAGE



STRIPED INNER COLLAR DETAIL ON MENS ASPEN SHIRTS (EXCEPT WHITE)



**BAS-809**  
**MENS SHORT SLEEVE ASPEN SHIRT**

**Weight** 130g/m<sup>2</sup> **Fabric** 70% cotton, 30% polyester, oxford fabric  
 • button down collar • striped neck band • chest pocket • turn up at sleeve • back yoke • shaped hem

BL BU GY W

HALF CHEST (CM)		RELAXED FIT						
S	M	L	XL	2XL	3XL	4XL	5XL	
58	61	64	67	70	73	76	79	

**BAS-810**  
**MENS LONG SLEEVE ASPEN SHIRT**

**Weight** 130g/m<sup>2</sup> **Fabric** 70% cotton, 30% polyester, oxford fabric  
 • button down collar • striped neck band • chest pocket  
 • adjustable two button cuff • shaped hem

BL BU GY W

HALF CHEST (CM)		RELAXED FIT						
S	M	L	XL	2XL	3XL	4XL	5XL	
58	61	64	67	70	73	76	79	



BAS-808 & BAS-4764 ARE AVAILABLE IN THE 6 COLOURS SHOWN ON THIS PAGE



**BAS-808**  
**LADIES SHORT SLEEVE ASPEN SHIRT**

**Weight** 130g/m<sup>2</sup> **Fabric** 70% cotton, 30% polyester, oxford fabric  
 • pearlised buttons • front and back darts • bust darts • back yoke • shaped hem

- BL
- BU
- GY
- W

HALF CHEST (CM) **STANDARD FIT**

S	M	L	XL	2XL	3XL	4XL
48	51	54	57	60	63	66

**BAS-4764**  
**LADIES LONG SLEEVE ASPEN SHIRT**

**Weight** 130g/m<sup>2</sup> **Fabric** 70% cotton, 30% polyester, oxford fabric  
 • pearlised buttons • front and back darts • bust darts • adjustable two button cuff • back yoke • shaped hem

- BL
- BU
- GY
- W

HALF CHEST (CM) **STANDARD FIT**

S	M	L	XL	2XL	3XL	4XL
48	51	54	57	60	63	66

PRICE INCLUDES DIGITAL TRANSFER OR EMBROIDERY. SEE PAGE 3 FOR DETAILS



ALT-NAML

**MENS LONG SLEEVE NORTHAMPTON SHIRT**

**Weight** 110g/m<sup>2</sup> **Fabric** 65% polyester, 35% cotton, yarn-dyed stripe • chest pocket • branded buttons • adjustable cuffs

BL RB SB

HALF CHEST (CM) **STANDARD FIT**

S	M	L	XL	2XL	3XL	4XL	5XL
52	56	60	64	68	72	76	80

ALT-NALL

**LADIES LONG SLEEVE NORTHAMPTON SHIRT**

**Weight** 110g/m<sup>2</sup> **Fabric** 65% polyester, 35% cotton, yarn-dyed stripe • open collar • front and back darts for shaping • adjustable cuffs • curved hem with side slits

BL RB SB

HALF CHEST (CM) **STANDARD FIT**

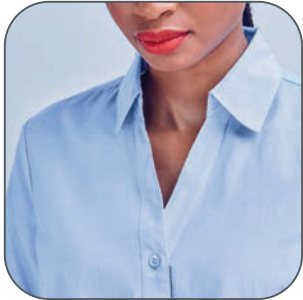
S	M	L	XL	2XL	3XL	4XL
45	49	53	57	61	65	69



YARN-DYED STRIPE DETAIL



ADJUSTABLE CUFFS ON LONG SLEEVE SHIRTS



OPEN COLLAR ON LADIES SHIRTS

**ALT-NAMS**  
**MENS SHORT SLEEVE NORTHAMPTON SHIRT**

**Weight** 110g/m<sup>2</sup> **Fabric** 65% polyester, 35% cotton, yarn-dyed stripe • chest pocket • branded buttons • turn-up at sleeve

BL RB SB

HALF CHEST (CM) **STANDARD FIT**

S	M	L	XL	2XL	3XL	4XL	5XL
52	56	60	64	68	72	76	80

**ALT-NALS**  
**LADIES SHORT SLEEVE NORTHAMPTON SHIRT**

**Weight** 110g/m<sup>2</sup> **Fabric** 65% polyester, 35% cotton, yarn-dyed stripe • open collar • front and back darts for shaping • turn-up cuffs • curved hem with side slits

BL RB SB

HALF CHEST (CM) **STANDARD FIT**

S	M	L	XL	2XL	3XL	4XL
45	49	53	57	61	65	69

ALT-NAML, ALT-NALL, ALT-NAMS & ALT-NALS ARE AVAILABLE IN THE 3 COLOURS SHOWN ON THIS PAGE



PRICE INCLUDES DIGITAL TRANSFER. SEE PAGE 3 FOR DETAILS



ALT-NHML  
**MENS LONG SLEEVE  
 NOTTINGHAM SHIRT**

**Weight** 110g/m<sup>2</sup> **Fabric** 55% polyester, 45% cotton, herringbone • button down collar • back yoke with box pleat • adjustable cuffs • curved hem

GY SB W

HALF CHEST (CM) **STANDARD FIT**

S	M	L	XL	2XL	3XL	4XL	5XL
52	56	60	64	68	72	76	80



BUTTON DOWN COLLAR



HERRINGBONE PATTERN

ALT-NHLL  
**LADIES LONG SLEEVE  
 NOTTINGHAM SHIRT**

**Weight** 110g/m<sup>2</sup> **Fabric** 55% polyester, 45% cotton, herringbone • front and back darts for shaping • two button cuff • curved hem • side slits

GY SB W

HALF CHEST (CM) **STANDARD FIT**

S	M	L	XL	2XL	3XL	4XL
45	49	53	57	61	65	69



ALT-NHML, ALT-NHLL, ALT-NHMS & ALT-NHLS ARE AVAILABLE IN THE 5 COLOURS SHOWN ON THIS PAGE



ALT-NHMS  
**MENS SHORT SLEEVE NOTTINGHAM SHIRT**

**Weight** 110g/m<sup>2</sup> **Fabric** 55% polyester, 45% cotton, herringbone  
 • button down collar • back yoke with box pleat  
 • curved hem

GY SB W

HALF CHEST (CM) **STANDARD FIT**

S	M	L	XL	2XL	3XL	4XL	5XL
52	56	60	64	68	72	76	80

ALT-NHLS  
**LADIES SHORT SLEEVE NOTTINGHAM SHIRT**

**Weight** 110g/m<sup>2</sup> **Fabric** 55% polyester, 45% cotton, herringbone  
 • front and back darts for shaping • stylish two button cuff  
 • curved hem • side slits

GY SB W

HALF CHEST (CM) **STANDARD FIT**

S	M	L	XL	2XL	3XL	4XL
45	49	53	57	61	65	69



**NEW**

CW-UB-194-A

**MENS LONG SLEEVE MODERNA TWILL SHIRT**

**Weight** 145g/m<sup>2</sup> **Fabric** 100% cotton twill • button down collar  
 • adjustable two button cuff • back yoke with shoulder pleats • curved hem

BL N W

HALF CHEST (CM) **STANDARD FIT**

S	M	L	XL	2XL	3XL	4XL	5XL
54	57	60	63	66	69	72	75

**NEW**

CW-UB-196-A

**LADIES LONG SLEEVE MODERNA TWILL SHIRT**

**Weight** 145g/m<sup>2</sup> **Fabric** 100% cotton twill • open neck collar  
 • adjustable two button cuff • features front and back darts for shaping • back yoke • curved hem

BL N W

HALF CHEST (CM) **STANDARD FIT**

S	M	L	XL	2XL	3XL	4XL
49	52	55	58	61	64	67

CW-UB-194-A & CW-UB-196-A ARE AVAILABLE  
 IN THE 3 COLOURS SHOWN ON THIS PAGE





**CLASSIC STYLE** with  
**DURABLE TWILL**  
for lasting comfort  
and wear

CW-UB-195-A & CW-UB-197-A ARE AVAILABLE IN THE 3 COLOURS SHOWN ON THIS SPREAD

**NEW**

CW-UB-195-A

**MENS SHORT SLEEVE MODERNA  
TWILL SHIRT**

**Weight** 145g/m<sup>2</sup> **Fabric** 100% cotton twill • button down collar  
• back yoke with shoulder pleats • curved hem

BL N W

HALF CHEST (CM) **STANDARD FIT**

S	M	L	XL	2XL	3XL	4XL	5XL
54	57	60	63	66	69	72	75

**NEW**

CW-UB-197-A

**LADIES SHORT SLEEVE MODERNA  
TWILL SHIRT**

**Weight** 145g/m<sup>2</sup> **Fabric** 100% cotton twill • open neck collar  
• features front and back darts for shaping • back yoke • curved hem

BL N W

HALF CHEST (CM) **STANDARD FIT**

S	M	L	XL	2XL	3XL	4XL
49	52	55	58	61	64	67

PRICE INCLUDES DIGITAL TRANSFER OR EMBROIDERY.SEE **PAGE 3** FOR DETAILS



A versatile style,  
crafted from  
**100% MOISTURE  
ABSORBENT**  
cotton twill.

BAS-7770 & BAS-7771 ARE AVAILABLE IN THE 2 COLOURS SHOWN ON THIS SPREAD

**BAS-7770**  
**MENS SHORT SLEEVE MILANO SHIRT**

**Weight** 150g/m<sup>2</sup> **Fabric** 100% cotton twill • tonal buttons  
• chest pocket • back yoke with box pleat • curved hem

BL W

HALF CHEST (CM) **STANDARD FIT**

S	M	L	XL	2XL	3XL	4XL	5XL
55	58	61	64	67	70	73	76

**BAS-7771**  
**LADIES SHORT SLEEVE MILANO SHIRT**

**Weight** 150g/m<sup>2</sup> **Fabric** 100% cotton twill • tonal buttons  
• front and back darts • back yoke

BL W

HALF CHEST (CM) **STANDARD FIT**

S	M	L	XL	2XL	3XL	4XL
48	51	54	57	60	63	66

PRICE INCLUDES DIGITAL TRANSFER OR EMBROIDERY. SEE **PAGE 3** FOR DETAILS



BAS-7772 & BAS-7773 ARE AVAILABLE IN THE 2 COLOURS SHOWN ON THIS SPREAD

BAS-7772

**MENS LONG SLEEVE MILANO SHIRT**

**Weight** 150g/m<sup>2</sup> **Fabric** 100% cotton twill • tonal buttons • chest pocket  
 • adjustable two button cuff • back yoke with box pleat • curved hem

BL W

HALF CHEST (CM) **STANDARD FIT**

S	M	L	XL	2XL	3XL	4XL	5XL
55	58	61	64	67	70	73	76

BAS-7773

**LADIES LONG SLEEVE MILANO SHIRT**

**Weight** 150g/m<sup>2</sup> **Fabric** 100% cotton twill • tonal buttons  
 • front and back darts • adjustable two button cuff • back yoke

BL W

HALF CHEST (CM) **STANDARD FIT**

S	M	L	XL	2XL	3XL	4XL
48	51	54	57	60	63	66



CW-UB-198-A & CW-UB-199-A ARE AVAILABLE IN THE 2 COLOURS SHOWN ON THIS PAGE

**NEW**

CW-UB-198-A

**MENS LONG SLEEVE ASHFORD SHIRT**

**Weight** 105g/m<sup>2</sup> **Fabric** 60% polyester, 40% cotton • classic mini check fabric • button down collar • adjustable two button cuff • back yoke with shoulder pleats • curved hem

BL BU

HALF CHEST (CM) **STANDARD FIT**

S	M	L	XL	2XL	3XL	4XL	5XL
54	57	60	63	66	69	72	75

**NEW**

CW-UB-199-A

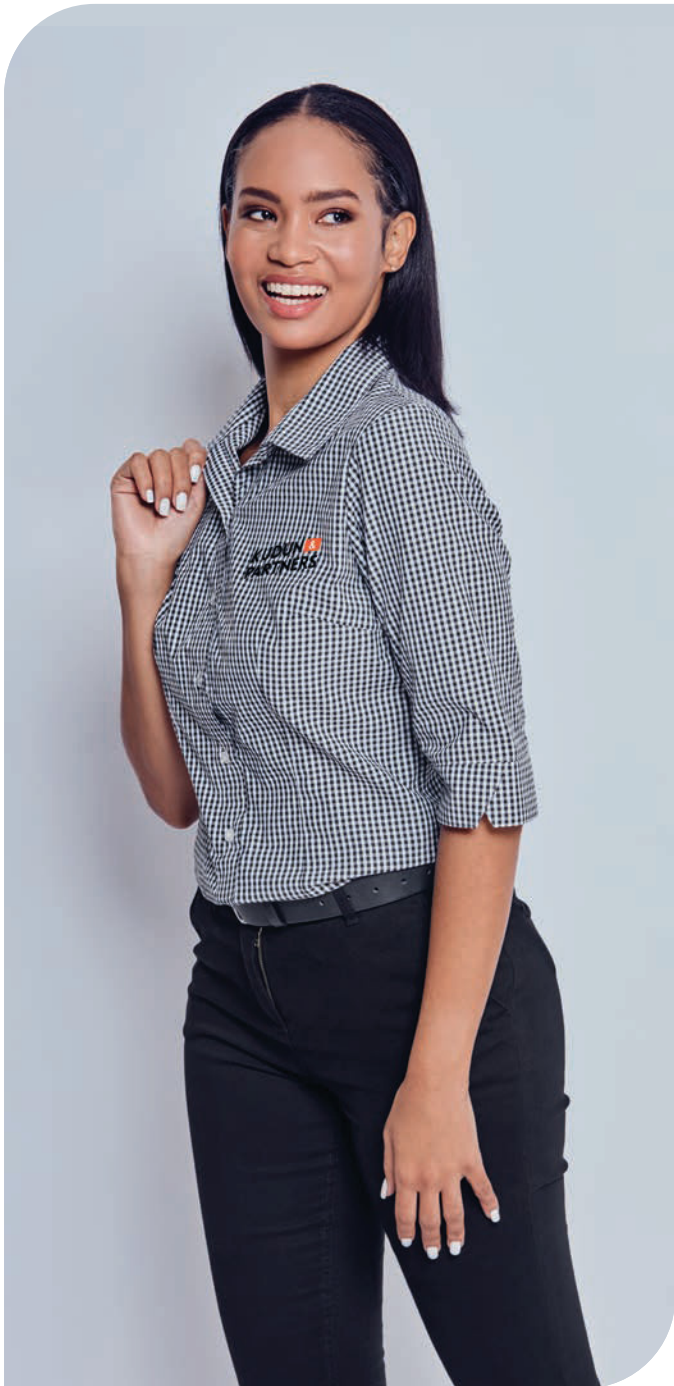
**MENS SHORT SLEEVE ASHFORD SHIRT**

**Weight** 105g/m<sup>2</sup> **Fabric** 60% polyester, 40% cotton • classic mini check fabric • button down collar • back yoke with shoulder pleats • curved hem

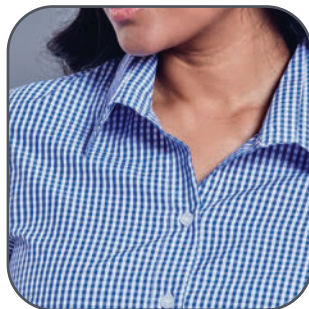
BL BU

HALF CHEST (CM) **STANDARD FIT**

S	M	L	XL	2XL	3XL	4XL	5XL
54	57	60	63	66	69	72	75



3/4 CUFFED SLEEVE WITH SLITS



OPEN COLLAR AND CLASSIC MINI CHECK DETAIL

**NEW**

CW-UB-200-A

**LADIES 3/4 SLEEVE ASHFORD SHIRT**

**Weight** 105g/m<sup>2</sup> **Fabric** 60% polyester, 40% cotton • classic mini check fabric • open neck collar • 3/4 cuffed sleeves with slits • features front and back darts for shaping • curved hem

**BL** **BU**

HALF CHEST (CM) **STANDARD FIT**

S	M	L	XL	2XL	3XL	4XL
49	52	55	58	61	64	67

PRICE INCLUDES DIGITAL TRANSFER OR EMBROIDERY. SEE PAGE 3 FOR DETAILS

BAS-3418

**MENS SHORT SLEEVE ASTON SHIRT**

**Weight** 95g/m<sup>2</sup> **Fabric** 60% polyester, 40% cotton, yarn-dyed check poplin • tonal buttons • chest pocket • back yoke with knife pleats • curved hem

BL GY LB N

HALF CHEST (CM) **STANDARD FIT**

S	M	L	XL	2XL	3XL	4XL	5XL
55	58	61	64	67	70	73	76



BAS-3420

**LADIES SHORT SLEEVE ASTON SHIRT**

**Weight** 95g/m<sup>2</sup> **Fabric** 60% polyester, 40% cotton, yarn-dyed check poplin • tonal buttons • chest pocket • side slits • back yoke • curved hem

BL GY LB N

HALF CHEST (CM) **STANDARD FIT**

S	M	L	XL	2XL	3XL	4XL
48	51	54	57	60	63	66

BAS-3418 & BAS-3420 ARE AVAILABLE IN THE 4 COLOURS SHOWN ON THIS PAGE





BAS-3419 & BAS-3421 ARE AVAILABLE IN THE 4 COLOURS SHOWN ON THIS PAGE

**BAS-3419**  
**MENS LONG SLEEVE ASTON SHIRT**

**Weight** 95g/m<sup>2</sup> **Fabric** 60% polyester, 40% cotton, yarn-dyed check poplin • tonal buttons • chest pocket • adjustable two button cuff • back yoke with knife pleats • curved hem

BL GY LB N

HALF CHEST (CM) **STANDARD FIT**

S	M	L	XL	2XL	3XL	4XL	5XL
55	58	61	64	67	70	73	76

**BAS-3421**  
**LADIES LONG SLEEVE ASTON SHIRT**

**Weight** 95g/m<sup>2</sup> **Fabric** 60% polyester, 40% cotton, yarn-dyed check poplin • tonal buttons • chest pocket • two button cuff • side slits • back yoke • curved hem

BL GY LB N

HALF CHEST (CM) **STANDARD FIT**

S	M	L	XL	2XL	3XL	4XL
48	51	54	57	60	63	66

PRICE INCLUDES DIGITAL TRANSFER OR EMBROIDERY. SEE PAGE 3 FOR DETAILS



**BIZ-3630**  
**MENS LONG SLEEVE MICRO CHECK SHIRT**

**Weight** 105g/m<sup>2</sup> **Fabric** 50% cotton, 50% polyester, easy iron, yarn-dyed fabric • adjustable two button cuff • tonal buttons • chest pocket • back yoke with knife pleats • extended back length • curved hem

**BU** **LB** **N**

HALF CHEST (CM) **STANDARD FIT**

S	M	L	XL	2XL	3XL	4XL
56	59	62.5	66	69.5	74	79

**BIZ-3631**  
**MENS SHORT SLEEVE MICRO CHECK SHIRT**

**Weight** 105g/m<sup>2</sup> **Fabric** 50% cotton, 50% polyester, easy iron, yarn-dyed fabric • tonal buttons • chest pocket • back yoke with knife pleats • extended back length • curved hem

**BU** **LB** **N**

HALF CHEST (CM) **STANDARD FIT**

S	M	L	XL	2XL	3XL	4XL
56	59	62.5	66	69.5	74	79

BIZ-3630 & BIZ-3631 ARE AVAILABLE IN THE 3 COLOURS SHOWN ON THIS PAGE



PRICE INCLUDES DIGITAL TRANSFER OR EMBROIDERY. SEE **PAGE 3** FOR DETAILS

BIZ-3632

**LADIES 3/4 SLEEVE  
MICRO CHECK SHIRT**

**Weight** 105g/m<sup>2</sup> **Fabric** 50% cotton, 50% polyester, easy iron, yarn-dyed fabric • 3/4 cuffed sleeves with slits • tonal buttons • front and back darts • curved hem

BU LB N

HALF CHEST (CM) **STANDARD FIT**

S	M	L	XL	2XL	3XL	4XL
48.5	51	54	56.5	59	61.5	64

MICRO-CHECK PATTERN





BAS-10260

**MENS LONG SLEEVE CAROLINA SHIRT**

**Weight** 105g/m<sup>2</sup> **Fabric** 60% polyester, 40% cotton, dobby weave • surface interest • chest pocket • two button cuff • back yoke with box pleat

SB W

HALF CHEST (CM) **STANDARD FIT**

S	M	L	XL	2XL	3XL	4XL	5XL
55	58	61	64	67	70	73	76



TWO BUTTON CUFF



SURFACE INTEREST DETAIL



BAS-10260 & BAS-10261 ARE AVAILABLE IN THE 2 COLOURS SHOWN ON THIS SPREAD

**BAS-10261**  
**LADIES LONG SLEEVE CAROLINA SHIRT**

**Weight** 105g/m<sup>2</sup> **Fabric** 60% polyester, 40% cotton, dobby weave • surface interest • open collar • front and back darts • bust darts • two button cuff • back yoke • curved hem

SB W

HALF CHEST (CM) **STANDARD FIT**

S	M	L	XL	2XL	3XL	4XL
49	52	55	58	61	64	67



TWO BUTTON CUFF



SURFACE INTEREST DETAIL



**STYLE AND COMFORT,**  
 wrapped up in 100% cotton  
 cross hatch denim.



BAS-11204

**MENS LONG SLEEVE  
 EASTWOOD SHIRT**

**Weight** 5.2oz **Fabric** 100% cotton, cross hatch denim • two front pockets • back yoke with two knife pleats

**BU**

HALF CHEST (CM) **STANDARD FIT**

S	M	L	XL	2XL	3XL	4XL	5XL
55	58	61	64	67	70	73	76

PRICE INCLUDES DIGITAL TRANSFER OR EMBROIDERY. SEE **PAGE 3** FOR DETAILS



BAS-11205  
**LADIES LONG SLEEVE  
 EASTWOOD SHIRT**

**Weight** 5.2oz **Fabric** 100% cotton, cross hatch denim • two v front pockets with button down flap • front darts • curved hem

BU

HALF CHEST (CM) **STANDARD FIT**

S	M	L	XL	2XL	3XL	4XL
48	51	54	57	60	63	66



# SYCAMORE LONG SLEEVE SHIRT

This cosmopolitan button-up shirt boasts a classic and contemporary style..

ELE-4012

## MENS LONG SLEEVE SYCAMORE SHIRT

**Weight** 125g/m<sup>2</sup> **Fabric** 50% cotton, 50% polyester, dobby weave • two button adjustable cuff • tonal buttons • chest pocket • back yoke with box pleat • curved hem

BL BU N W

HALF CHEST (CM) **STANDARD FIT**

S	M	L	XL	2XL	3XL	4XL
56	58.5	61	66	68.5	71	75

ELE-4013

## LADIES LONG SLEEVE SYCAMORE SHIRT

**Weight** 125g/m<sup>2</sup> **Fabric** 50% cotton, 50% polyester, dobby weave • two button cuff • tonal buttons • front dart • bust dart • back yoke with 3-piece back panel • curved hem

BL BU N W

HALF CHEST (CM) **STANDARD FIT**

S	M	L	XL	2XL	3XL
48	51	54.5	57	60	62



ELE-4012 & ELE-4013 ARE AVAILABLE IN THE 4 COLOURS SHOWN ON THIS SPREAD



PRICE INCLUDES DIGITAL TRANSFER OR EMBROIDERY. SEE PAGE 3 FOR DETAILS

ALEX VARGA®

This ultra-soft **MODAL**  
blend shirt offers  
**ECO-CONSCIOUS LUXURY**  
you can feel good about





BACK YOKE



ENGRAVED BUTTONS



ALEX VARGA SILICONE LOGO ON SLEEVE

CW-AV-188-A & CW-AV-189-A ARE AVAILABLE IN THE 4 COLOURS SHOWN ON THIS PAGE



**NEW**

CW-AV-188-A  
**MENS LONG SLEEVE ALEX VARGA  
 HALLSTATT SHIRT**

**Weight** 120g/m<sup>2</sup> **Fabric** 88% polyester, 12% modal • ultra soft and luxurious modal blend fabric with eco-friendly properties • sleek and modern design • adjustable two button cuff • engraved buttons • back yoke • curved hem • Alex Varga silicone logo

BL LB N W

HALF CHEST (CM) STANDARD FIT							
S	M	L	XL	2XL	3XL	4XL	5XL
53	57	61	65	69	73	77	81

**NEW**

CW-AV-189-A  
**LADIES LONG SLEEVE ALEX VARGA  
 HALLSTATT SHIRT**

**Weight** 120g/m<sup>2</sup> **Fabric** 88% polyester, 12% modal • ultra soft and luxurious modal blend fabric with eco-friendly properties • sleek and modern design • adjustable two button cuff • features front and back darts for shaping • engraved buttons • back yoke • curved hem • Alex Varga silicone logo

BL LB N W

HALF CHEST (CM) STANDARD FIT						
S	M	L	XL	2XL	3XL	4XL
48	52	56	60	64	68	72

PRICE INCLUDES DIGITAL TRANSFER. SEE PAGE 3 FOR DETAILS





CW-AV-179-A & CW-AV-180-A ARE AVAILABLE IN THE 3 COLOURS SHOWN ON THIS PAGE

The **STRETCH PROPERTIES** allow you to enjoy **FREEDOM OF MOVEMENT**, without compromising on a sleek and stylish tailored look.

CW-AV-179-A

**MENS LONG SLEEVE  
ALEX VARGA OPUS STRETCH SHIRT**

**Weight** 150g/m<sup>2</sup> **Fabric** 65% cotton 33% polyester 2% spandex  
• satin stretch fabric ensures comfort and ease of movement  
• sleek and stylish design • adjustable two button cuff  
• engraved tonal buttons • back yoke • curved hem • Alex Varga silicone logo

BL N W

HALF CHEST (CM) **STANDARD FIT**

S	M	L	XL	2XL	3XL	4XL	5XL
52	56	60	64	68	72	76	80

CW-AV-180-A

**LADIES LONG SLEEVE  
ALEX VARGA OPUS STRETCH SHIRT**

**Weight** 150g/m<sup>2</sup> **Fabric** 65% cotton 33% polyester 2% spandex  
• satin stretch fabric ensures comfort and ease of movement  
• sleek and stylish design • adjustable two button cuff • engraved tonal double buttons • front and back darts for shaping • side slits  
• back yoke • curved hem • Alex Varga silicone logo

BL N W

HALF CHEST (CM) **STANDARD FIT**

S	M	L	XL	2XL	3XL	4XL
45	49	53	57	61	65	69



ALEX VARGA SILICONE LOGO ON SLEEVE



PRICE INCLUDES DIGITAL TRANSFER. SEE **PAGE 3** FOR DETAILS



ALEX VARGA SILICONE LOGO ON SLEEVE

This work shirt, enhanced with spandex for **STRETCH AND FLEXIBILITY**, combines supreme comfort with a **LUXURIOUSLY SOFT FABRIC** for effortless movement throughout the day

CW-AV-186-A

### MENS LONG SLEEVE ALEX VARGA SORRENTO SHIRT

**Weight** 120g/m<sup>2</sup> **Fabric** 95% polyester, 5% spandex • a crisp blend material with soft handfeel • stretch fabric ensures comfort and ease of movement • adjustable two button cuff • engraved matt buttons • back yoke • curved hem • Alex Varga silicone logo

BL C N W

HALF CHEST (CM) **STANDARD FIT**

S	M	L	XL	2XL	3XL	4XL	5XL
53	57	61	65	69	73	77	81

CW-AV-187-A

### LADIES LONG SLEEVE ALEX VARGA SORRENTO SHIRT

**Weight** 120g/m<sup>2</sup> **Fabric** 95% polyester, 5% spandex • a crisp blend material with soft handfeel • stretch fabric ensures comfort and ease of movement • adjustable two button cuff • concealed placket with engraved matt buttons • front and back darts for shaping • curved hem • Alex Varga silicone logo

BL C N W

HALF CHEST (CM) **STANDARD FIT**

S	M	L	XL	2XL	3XL	4XL
46	50	54	58	62	66	70

CW-AV-186-A & CW-AV-187-A ARE AVAILABLE IN THE 4 COLOURS SHOWN ON THIS PAGE







**BAS-7760**  
**MENS SHORT SLEEVE WILDSTONE SHIRT**

**Weight** 150g/m<sup>2</sup> **Fabric** 100% cotton twill • front and back yoke • two pleated chest pockets with button flap • metal buttons

BL KH MG N ST W

HALF CHEST (CM) **STANDARD FIT**

S	M	L	XL	2XL	3XL	4XL	5XL
55	58	61	64	67	70	73	76

**BAS-7761**  
**LADIES SHORT SLEEVE WILDSTONE SHIRT**

**Weight** 150g/m<sup>2</sup> **Fabric** 100% cotton twill • two pleated chest pockets with button flap • metal buttons • back yoke • curved hem

BL KH MG N ST W

HALF CHEST (CM) **STANDARD FIT**

S	M	L	XL	2XL	3XL	4XL
48	51	54	57	60	63	66

BAS-7760, BAS-7761, BAS-7762 & BAS-7763 ARE AVAILABLE IN THE 7 COLOURS SHOWN ON THIS PAGE



**BAS-7762**  
**MENS LONG SLEEVE WILDSTONE SHIRT**

**Weight** 150g/m<sup>2</sup> **Fabric** 100% cotton twill • front and back yoke • two pleated chest pockets with button flap • metal buttons

BL KH MG N ST W

HALF CHEST (CM) **STANDARD FIT**

S	M	L	XL	2XL	3XL	4XL	5XL
55	58	61	64	67	70	73	76

**BAS-7763**  
**LADIES LONG SLEEVE WILDSTONE SHIRT**

**Weight** 150g/m<sup>2</sup> **Fabric** 100% cotton twill • two pleated chest pockets with button flap • metal buttons • back yoke • curved hem

BL KH MG N ST W

HALF CHEST (CM) **STANDARD FIT**

S	M	L	XL	2XL	3XL	4XL
48	51	54	57	60	63	66

PRICE INCLUDES DIGITAL TRANSFER OR EMBROIDERY. SEE PAGE 3 FOR DETAILS



# BUILT TO WITHSTAND RUGGED LANDSCAPES



ALT-SGMS  
**MENS SHORT SLEEVE  
 SERENGETI 2-TONE BUSH SHIRT**

**Weight** 160g/m<sup>2</sup> **Fabric** 100% brushed cotton twill • box pleated pockets with button down flap • front and back contrast yoke • back yoke has a box pleat • metal buttons • twin needle finishing at seams for strength and durability

MG ST **STMG**

HALF CHEST (CM) **STANDARD FIT**

S	M	L	XL	2XL	3XL	4XL	5XL
52	56	60	64	68	72	76	80

## Harare

**+263 71 899 6341**  
**+263 77 330 5799**  
**+263 24 249 5553**

6 Lloyd Close, Ballantyne, Harare

## Bulawayo

**+263 77 743 9367**

Office 305 3rd floor Masiye House  
Cnr 9th Avenue and Fort Street



[info@giftsandmore.co.zw](mailto:info@giftsandmore.co.zw)

Follow Us



[www.giftsandmore.co.zw](http://www.giftsandmore.co.zw)